

VANILLA 20W CC DRIVER

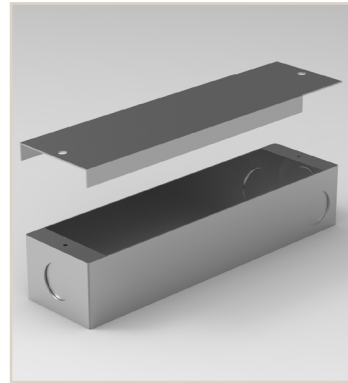


Project Name:	Type:
Product Code:	Date:



20W CC DRIVER

The Vanilla 20W CC Driver is a constant current driver with multiple dimming options. The 5 in 1 dimming options are, Triac, 0-10V, 1-10V, Potentiometer, 10V. The driver has a dimming range of 1-100%. Along with this the driver has short circuit and over temperature protection. The drivers come with the C-06 enclosure.



PERFORMANCE

	5 IN 1 DIMMING LED DRIVER
	20W
VOLTAGE:	100-277VAC
DIMMING RANGE:	1-100% (FLICKER FREE)
OUTPUT:	CONSTANT CURRENT
CLASS:	CLASS 2 / CLASS P
CURRENT TOLERANCE:	±5%
ENCLOSURE:	C-06 (INCLUDED)
DIMMING:	Triac / 0-10V / 1-10V / 10V PWM / POTENTIOMETER
STANDARD:	UL8750, CLASS 2
WORKING TEMP:	-40~+140°F (-40~+60°C)
RATING:	IP20



W : 1.7" H : 0.79" L : 6.26"

ORDER INFORMATION

Order Code

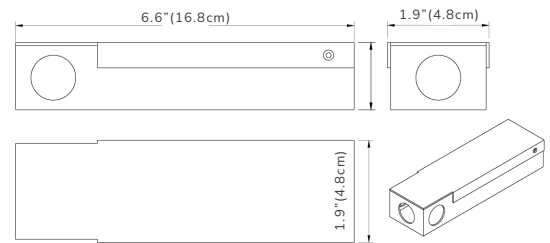
MAKE	MODEL
VAN	DVR 20W CC-USD

OPTION
PLUG-IN AND 6' CORD + POTENTIOMETER

KEY DIMENSIONS

20W | C-06

Length: 6.6" (16.8cm) Width: 1.9" (4.8cm) Height: 1.25" (3.175cm)

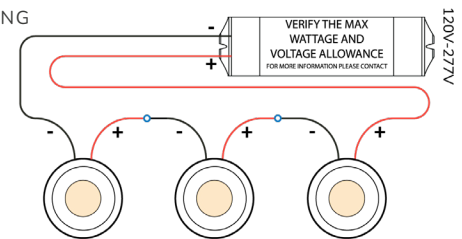


The Driver is recommended to be mounted in at least 2" of free flow air space to allow for proper ventilation.

WIRING DIAGRAM - NO HOT START

20W - MULTIPLE FIXTURES REQUIRE WIRING IN SERIES
TERMINAL WIRING GAUGE MAX SIZE AWG#16

SERIES WIRING

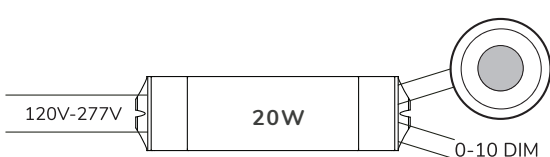


QUANTITY OF FIXTURES DEPENDANT ON FIXTURE DATA

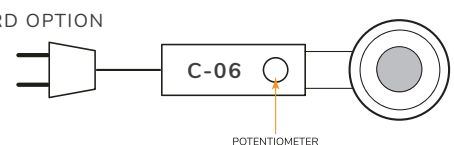
ELV/MLV



0-10V



PLUG-IN CORD OPTION



TECHNICAL SPECIFICATIONS

20W DRIVER								
RATED CURRENT:	<div><div>ON</div><div>OFF</div></div>	225mA	300mA	350mA	425mA	500mA	575mA	700mA
CURRENT TOLERANCE:	±5%							
DC VOLTAGE:		3-42V	3-42V	3-42V	3-42V	3-40V	3-36V	3-30V
RATED POWER:		10.5W	14.7W	16.8W	18.9W	20W	19.8W	19.8W
RATED INPUT VOLTAGE:		100-277VAC						
RATED FREQUENCY:		47-63Hz						
POWER FACTOR:		0.95@120VAC 60Hz 0.88@277VAC 60Hz						
EFFICIENCY (Typ.):		78%@120VAC 60Hz 78%@277VAC 60Hz						
AC CURRENT (MAX):		0.3A						
INRUSH CURRENT (Typ.):		2.56A,18US @ 50%IPEAK AT 120VAC 3.04A,10US @ 50%IPEAK at 277VAC						
LEAKAGE CURRENT:		<0.50mA						
SHORT CIRCUIT:		CONSTANT CURRENT MODE, RECOVERS AUTOMATICALLY AFTER FAULT CONDITION IS REMOVED						
OUTPUT NO-LOAD VOLTAGE:		42V MAX						
OVER TEMPERATURE:		AMBIENT TEMP. OVER 50±5°C (122±9°F), OUTPUT CURRENT WILL BE REDUCED TO 50%; AMBIENT TEMP. OVER 60±5°C (140±9°F), OUTPUT WILL BE OFF, RECOVERS AUTOMATICALLY						
PROTECTION CLASS:		CLASS 2 CLASS P						
WORKING TEMP:		-40-+60°C (-40-+140°F)						
WORKING HUMIDITY:		20-90%RH, NON-CONDENSING						
STORAGE TEMP:		-40-+80°C (-40-+176°F)						
STORAGE HUMIDITY:		10-95%RH						
TEMP COEFFICIENT:		±0.03%/°C (0-50°C) (32-122°F)						
VIBRATION:		10-500Hz, 2G 10min./1 CYCLE, PERIOD FOR 60min. EACH ALONG X,Y,Z AXIS						
SAFETY STANDARDS:		UL8750						
WITHSTAND VOLTAGE:		I/P-O/P:1.80KVAC						
ISOLATION RESISTANCE:		I/P-O/P:100MΩ / 500VDC / 25°C / 70%RH						
EMC EMISSION:		FCC 47 CFR PART 15, SUBPART B						