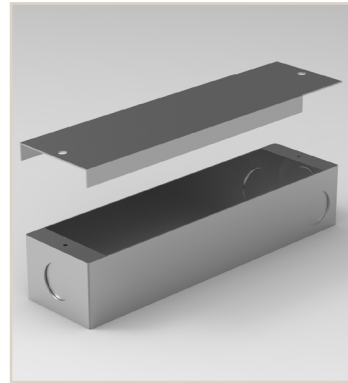


| | |
|---------------|-------|
| Project Name: | Type: |
| Product Code: | Date: |



20W CC DRIVER

The Vanilla 20W CC Driver is a constant current driver with multiple dimming options. The 5 in 1 dimming options are, Triac, 0-10V, 1-10V, Potentiometer, 10V. The driver has a dimming range of 1-100%. Along with this the driver has short circuit and over temperature protection. The drivers come with the C-06 enclosure.



PERFORMANCE

| | 5 IN 1 DIMMING LED DRIVER |
|--------------------|---|
| | 20W |
| VOLTAGE: | 100-277VAC |
| DIMMING RANGE: | 1-100% (FLICKER FREE) |
| OUTPUT: | CONSTANT CURRENT |
| CLASS: | CLASS 2 / CLASS P |
| CURRENT TOLERANCE: | ±5% |
| ENCLOSURE: | C-06 (INCLUDED) |
| DIMMING: | Triac / 0-10V / 1-10V / 10V PWM / POTENTIOMETER |
| STANDARD: | UL8750, CLASS 2 |
| WORKING TEMP: | -40~+140°F (-40~+60°C) |
| RATING: | IP20 |



W : 1.7" H : 0.79" L : 6.26"

ORDER INFORMATION

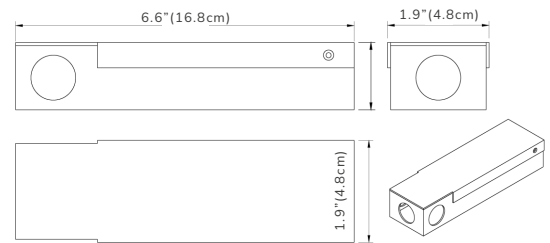
| Order Code | | | |
|------------|-------|-----|--------|
| MAKE | MODEL | | |
| VAN | DVR | 20W | CC-US0 |

OPTION
PLUG-IN AND 6' CORD + POTENTIOMETER

KEY DIMENSIONS

20W | C-06

Length: 6.6" (16.8cm) Width: 1.9" (4.8cm) Height: 1.25" (3.175cm)

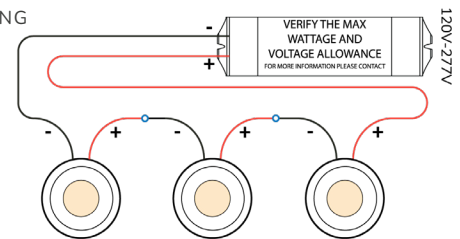


The Driver is recommended to be mounted in at least 2" of free flow air space to allow for proper ventilation.

WIRING DIAGRAM - NO HOT START

20W - MULTIPLE FIXTURES REQUIRE WIRING IN SERIES
TERMINAL WIRING GAUGE MAX SIZE AWG#16

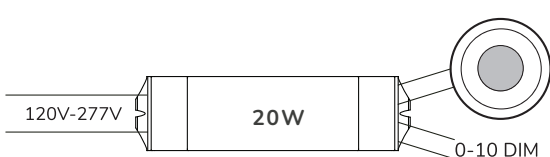
SERIES WIRING



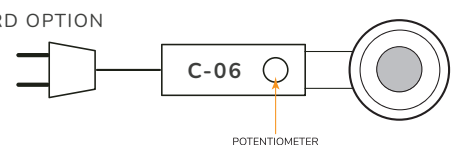
ELV/MLV



0-10V



PLUG-IN CORD OPTION



TECHNICAL SPECIFICATIONS

| | | | | | | | | |
|---|---|---|---|---|---|---|---|---|
| | 20W DRIVER | | | | | | | |
| RATED CURRENT: <div><div>ON</div><div>OFF</div></div> | 225mA <div><div></div><div></div><div></div></div> | 300mA <div><div></div><div></div><div></div></div> | 350mA <div><div></div><div></div><div></div></div> | 425mA <div><div></div><div></div><div></div></div> | 500mA <div><div></div><div></div><div></div></div> | 575mA <div><div></div><div></div><div></div></div> | 625mA <div><div></div><div></div><div></div></div> | 700mA <div><div></div><div></div><div></div></div> |
| CURRENT TOLERANCE: | ±5% | | | | | | | |
| DC VOLTAGE: | 3-42V | 3-42V | 3-42V | 3-42V | 3-40V | 3-36V | 3-30V | 3-28V |
| RATED POWER: | 10.5W | 14.7W | 16.8W | 18.9W | 20W | 19.8W | 19.8W | 20.3W |
| RATED INPUT VOLTAGE: | 100-277VAC | | | | | | | |
| RATED FREQUENCY: | 47-63Hz | | | | | | | |
| POWER FACTOR: | 0.95@120VAC 60Hz 0.88@277VAC 60Hz | | | | | | | |
| EFFICIENCY (Typ.): | 78%@120VAC 60Hz 78%@277VAC 60Hz | | | | | | | |
| AC CURRENT (MAX): | 0.3A | | | | | | | |
| INRUSH CURRENT (Typ.): | 2.56A,18US @ 50%IPEAK AT 120VAC 3.04A,10US @ 50%IPEAK at 277VAC | | | | | | | |
| LEAKAGE CURRENT: | <0.50mA | | | | | | | |
| SHORT CIRCUIT: | CONSTANT CURRENT MODE, RECOVERS AUTOMATICALLY AFTER FAULT CONDITION IS REMOVED | | | | | | | |
| OUTPUT NO-LOAD VOLTAGE: | 42V MAX | | | | | | | |
| OVER TEMPERATURE: | AMBIENT TEMP. OVER 50±5°C (122±9°F), OUTPUT CURRENT WILL BE REDUCED TO 50%; AMBIENT TEMP. OVER 60±5°C (140±9°F), OUTPUT WILL BE OFF, RECOVERS AUTOMATICALLY | | | | | | | |
| PROTECTION CLASS: | CLASS 2 CLASS P | | | | | | | |
| WORKING TEMP: | -40-+60°C (-40-+140°F) | | | | | | | |
| WORKING HUMIDITY: | 20-90%RH, NON-CONDENSING | | | | | | | |
| STORAGE TEMP: | -40-+80°C (-40-+176°F) | | | | | | | |
| STORAGE HUMIDITY: | 10-95%RH | | | | | | | |
| TEMP COEFFICIENT: | ±0.03%/°C (0-50°C) (32-122°F) | | | | | | | |
| VIBRATION: | 10-500Hz, 2G 10min./1 CYCLE, PERIOD FOR 60min. EACH ALONG X,Y,Z AXIS | | | | | | | |
| SAFETY STANDARDS: | UL8750 | | | | | | | |
| WITHSTAND VOLTAGE: | I/P-O/P:1.80KVAC | | | | | | | |
| ISOLATION RESISTANCE: | I/P-O/P:100MΩ / 500VDC / 25°C / 70%RH | | | | | | | |
| EMC EMISSION: | FCC 47 CFR PART 15, SUBPART B | | | | | | | |