

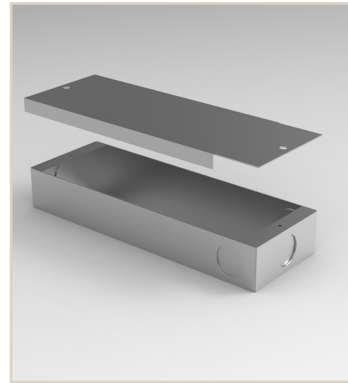
VANILLA 40W CC DRIVER SELV

| | |
|---------------|-------|
| Project Name: | Type: |
| Product Code: | Date: |



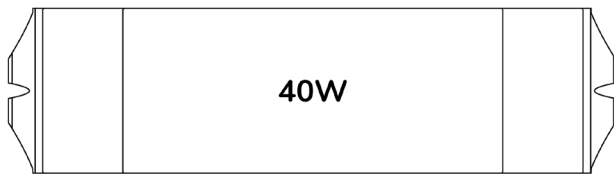
40W CC DRIVER

The Vanilla 40W CC Driver is a constant current driver with multiple dimming options. The 5 in 1 dimming options are, Triac, 0-10V, 1-10V, Potentiometer, 10V. The driver has a dimming range of 1-100%. Along with this the driver has short circuit and over temperature protection. The drivers come with the C-AFL enclosure.



PERFORMANCE

| | 5 IN 1 DIMMING LED DRIVER |
|--------------------|---|
| | 40W |
| VOLTAGE: | 100-277VAC |
| DIMMING RANGE: | 1-100% (FLICKER FREE) |
| OUTPUT: | CONSTANT CURRENT |
| CLASS: | CLASS 2 / CLASS P |
| CURRENT TOLERANCE: | ±5% |
| ENCLOSURE: | C-AFL (INCLUDED) |
| DIMMING: | Triac / 0-10V / 1-10V / 10V PWM / POTENTIOMETER |
| STANDARD: | UL8750, CLASS 2 |
| WORKING TEMP: | -40~+140°F (-40~+60°C) |
| RATING: | IP20 |



W : 2.1" H : 0.8" L : 6.73"

ORDER INFORMATION

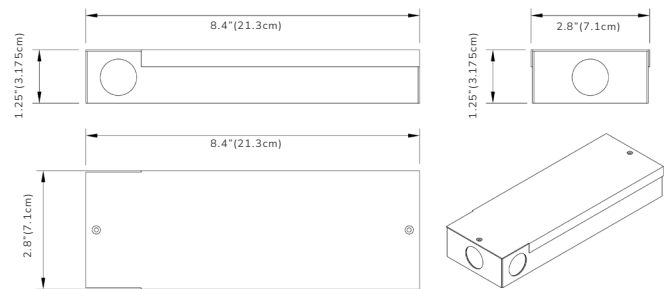
| Order Code | | | |
|------------|-------|-----|--------|
| MAKE | MODEL | | |
| VAN | DVR | 40W | CC-US0 |

OPTION
PLUG-IN AND 6' CORD + POTENTIOMETER

KEY DIMENSIONS

40W | C-AFL

Length: 8.4" (21.3cm) Width: 2.8" (7.1cm) Height: 1.25" (3.175cm)

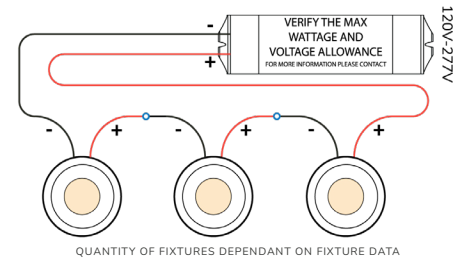


The Driver is recommended to be mounted in at least 2" of free flow air space to allow for proper ventilation.

WIRING DIAGRAM - max 70FT - NO HOT START

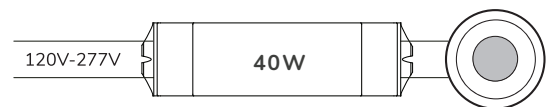
40W - MULTIPLE FIXTURES REQUIRE WIRING IN SERIES
TERMINAL WIRING GAUGE MAX SIZE AWG#16

SERIES WIRING

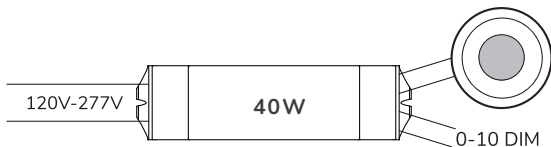


QUANTITY OF FIXTURES DEPENDANT ON FIXTURE DATA

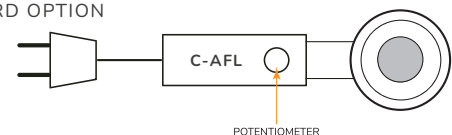
ELV/MLV



0-10V



PLUG-IN CORD OPTION



TECHNICAL SPECIFICATIONS

| | | | | | | | | | | | | | | | | | |
|---|--|---|-------|-------|-------|-------|-------|-------|-------|-------|-------|-------|--------|--------|--------|--------|--------|
| | | 40W DRIVER | | | | | | | | | | | | | | | |
| RATED CURRENT: <div><div>T</div><div>ON</div></div> <div><div>I</div><div>OFF</div></div> | | 300mA | 350mA | 400mA | 450mA | 500mA | 550mA | 600mA | 650mA | 700mA | 800mA | 900mA | 1000mA | 1100mA | 1200mA | 1300mA | 1400mA |
| | | | | | | | | | | | | | | | | | |
| CURRENT TOLERANCE: | | 25mA | | | | | | | | | | | | | | | |
| DC VOLTAGE: | | 3-50V | | | | | | | | | | 3-45V | 3-40V | 3-37V | 3-34V | 3-31V | 3-29V |
| RATED POWER: | | 15W | 17.5W | 20W | 22.5W | 25W | 27.5W | 30W | 32.5W | 35W | 40W | | | | | | |
| RATED INPUT VOLTAGE: | | 100-277VAC | | | | | | | | | | | | | | | |
| RATED FREQUENCY: | | 47-63Hz | | | | | | | | | | | | | | | |
| POWER FACTOR: | | 0.95@120VAC 60Hz 0.90@277VAC 60Hz | | | | | | | | | | | | | | | |
| EFFICIENCY (Typ.): | | 82%@120VAC | | | | | | | | | | | | | | | |
| AC CURRENT (MAX): | | 0.52A/100VAC | | | | | | | | | | | | | | | |
| INRUSH CURRENT (Typ.): | | 3.12A,36US @ 50%IPEAK @ 120VAC 21.2A, 13.8US@50%IPEAK @ 230VAC 9.2A,34US @ 50%IPEAK @ 277VAC | | | | | | | | | | | | | | | |
| LEAKAGE CURRENT: | | <0.50mA | | | | | | | | | | | | | | | |
| SHORT CIRCUIT: | | CONSTANT CURRENT MODE, RECOVERS AUTOMATICALLY AFTER FAULT CONDITION IS REMOVED | | | | | | | | | | | | | | | |
| OUTPUT NO-LOAD VOLTAGE: | | 75V MAX | | | | | | | | | | | | | | | |
| OVER TEMPERATURE: | | AMBIENT TEMP. OVER 50±5°C (122±9°F), OUTPUT CURRENT WILL BE REDUCED TO 50%; AMBIENT TEMP. OVER 60±5°C (140±9°F), OUTPUT WILL BE OFF, RECOVERS AUTOMATICALLY | | | | | | | | | | | | | | | |
| PROTECTION CLASS: | | CLASS 2 | | | | | | | | | | | | | | | |
| WORKING TEMP: | | -40-+60°C (-40-+140°F) | | | | | | | | | | | | | | | |
| WORKING HUMIDITY: | | 20-90%RH, NON-CONDENSING | | | | | | | | | | | | | | | |
| STORAGE TEMP: | | -40-+80°C (-40-+176°F) | | | | | | | | | | | | | | | |
| STORAGE HUMIDITY: | | 10-95%RH | | | | | | | | | | | | | | | |
| TEMP COEFFICIENT: | | ±0.03%/°C (0-50°C) (32-122°F) | | | | | | | | | | | | | | | |
| VIBRATION: | | 10-500Hz, 2G 10min./1 CYCLE, PERIOD FOR 60min. EACH ALONG X,Y,Z AXIS | | | | | | | | | | | | | | | |
| SAFETY STANDARDS: | | EN61347-1 / EN61347-2-13 / UL8750 | | | | | | | | | | | | | | | |
| WITHSTAND VOLTAGE: | | I/P-O/P:1.80KVAC | | | | | | | | | | | | | | | |
| ISOLATION RESISTANCE: | | I/P-O/P:100MΩ / 500VDC / 25°C / 70%RH | | | | | | | | | | | | | | | |
| EMC EMISSION: | | FCC 47 CFR PART 15, SUBPART B | | | | | | | | | | | | | | | |