

Project Name:	Type:
Product Code:	Date:



VANILLA LINK

The Vanilla Link is a unique connecting system that allows the creation of long linear runs without interlink cables while maintaining the same LED pitch. Its ultra-compact form factor permits installation in tight spaces.

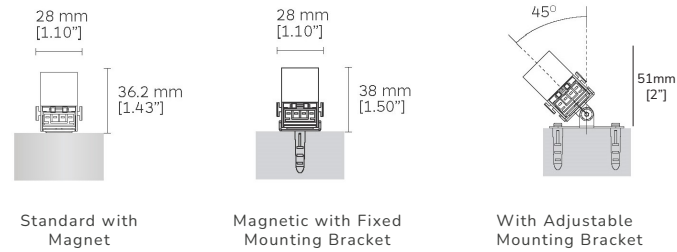
A wide range of optic options including narrow, medium, surface grazing, and wall wash beam makes Link LED an excellent choice for cove, surface grazing, and Wall-washing applications. IP20



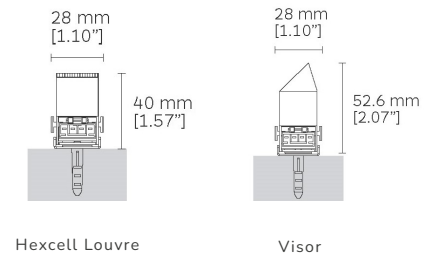
PERFORMANCE

	LED			
CCT:	2700K	3000K	3500K	4000K
LUMENS:	1884lm/Link	1944lm/Link	2040lm/Link	2148lm/Link
WATTAGE:	13.2 WATTS/LINK			
CRI:	90 CRI			
LED LIFE:	50,000 hours			
POWER:	48V			
SDCM:	3 STEP			
CCT:	2700K	3000K	3500K	4000K

MOUNTING DIMENSIONS

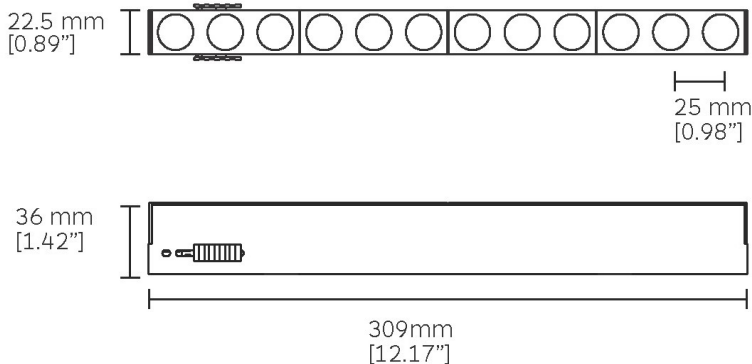


ACCESSORIES DIMENSIONS



KEY DIMENSIONS

Min Length = 12.17" (309mm) / 12 x LED, 1 Link



G146



G145



ORDER INFORMATION

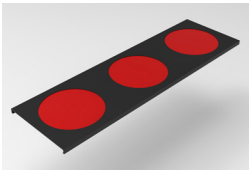
Order Code

MAKE	PROFILE	COLOR TEMP	OPTICS	FINISH	DRIVER	MOUNTING	ACCESSORIES
VAN	LINK-G146	27K 2700K	ST 10°	BO Black	0-10V	FM Fixed Mounting	CFR Color Filter Red
	LINK-G145	30K 3000K	NF 17°	WO White*	DALI DIM*	AM Adjustable Mounting	CFG Color Filter Green
		35K 3500K	FL 29°	PB Polished Brass*			CFB Color Filter Blue
		40K 4000K	EL 15°x50°	GO Gold*			CFY Color Filter Yellow
			WW				CCF Custom Color Filter*
			VISOR				H Hexcell Louvre
			ST 10°				OM Optical Module
			NF 17°				FPC Flexible Power Cable
			FL 29°				PF Power Feed
			EL 15°x50°				
			WW				

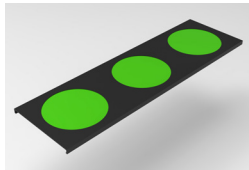
*REQUIRES MINIMUM ORDER QUANTITY

ACCESSORIES

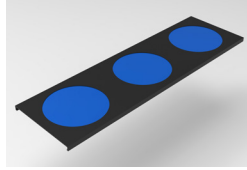
COLOR FILTER



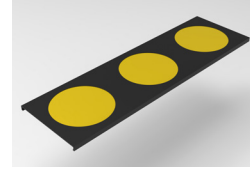
Color Filter Red



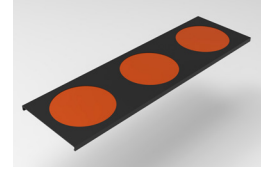
Color Filter Green



Color Filter Blue

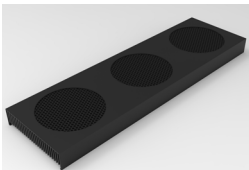


Color Filter Yellow



Custom Color Filter

OPTIC/ACCESSORIES



Hexcell Louvre



Optic w/Visor

MOUNTING ACCESSORIES

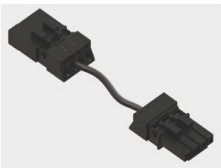


Fixed Mounting Bracket



Adjustable Mounting Bracket

POWER ACCESSORIES



Flexible Power Cable
39" (1000mm)

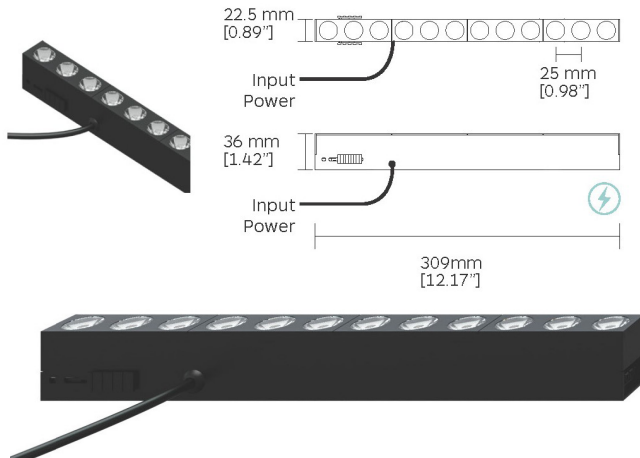


Power Feed
19" (500mm)

TECHNICAL FACTS

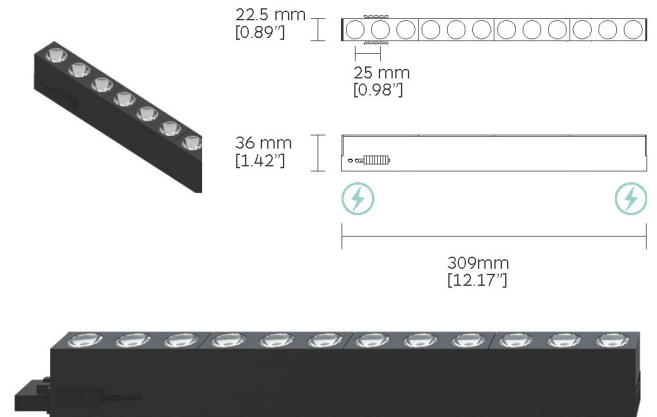
G146

Min.L = 309mm (12.17") | 12xLED, 1 Link
G146 with side power feed cable. The following LINK can only be connected from 1 side.
Input Power Cable Length 600mm



G145

Min.L = 309mm (12.17") | 12xLED, 1 Link
G145 can be connected from both sides.



WIRING DIAGRAM

WIRING TO A UNIVERSAL JUNCTION BOX

6 LINK MAX RUN

