

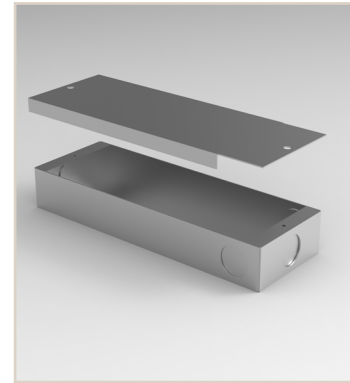
Project Name:	Type:
Product Code:	Date:

VANILLA DALI-2 40W CC DRIVER



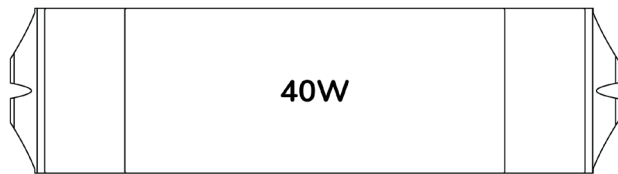
DALI-2 40W CC DRIVER

The Vanilla DALI-2 40W CC Driver is a constant current driver that supports DALI-2 control. The driver has a dimming range of 1-100%. Along with this the driver has short circuit and over temperature protection. The drivers come with the C-AFL enclosure.



PERFORMANCE

	DALI-2 LED DRIVER
	40W
VOLTAGE:	100-277VAC
DIMMING RANGE:	1-100% (FLICKER FREE)
OUTPUT:	CONSTANT CURRENT
CLASS:	CLASS 2 / CLASS P
CURRENT TOLERANCE:	±5%
ENCLOSURE:	C-AFL (INCLUDED)
DIMMING:	DALI-2
STANDARD:	UL8750, CLASS 2
WORKING TEMP:	-40~+140°F (-40~+60°C)
RATING:	IP20



W : 2.1" H : 0.8" L : 6.75"

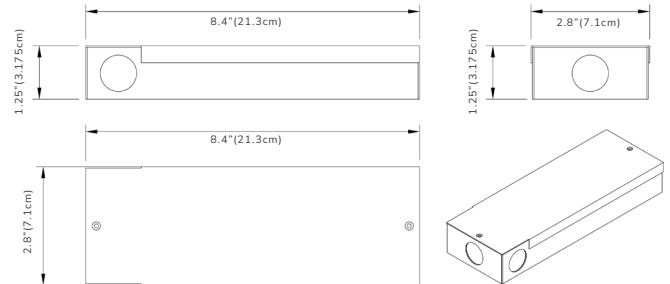
ORDER INFORMATION

Order Code			
MAKE	MODEL		
VAN	DVR	40W	CC-DALI

KEY DIMENSIONS

40W CC DALI-2 | C-AFL

Length: 8.4" (21.3cm) Width: 2.8" (7.1cm) Height: 1.25" (3.175cm)

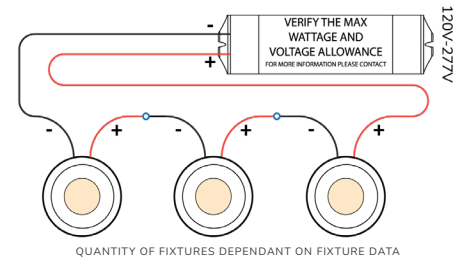


The Driver is recommended to be mounted in at least 2" of free flow air space to allow for proper ventilation.

WIRING DIAGRAM - max 70FT - NO HOT START

40W - MULTIPLE FIXTURES REQUIRE WIRING IN SERIES
TERMINAL WIRING GAUGE MAX SIZE AWG#16

SERIES WIRING



- Using DALI-2 dimming with DALI power and dimmer



- Using DALI-2 dimming with DALI system and DALI bus




- Using DALI-2 dimming with intelligent device, DALI master and dimmer

Note: For DALI Dimming Wiring Diagram 3, please noted that only one DALI power is needed in the DALI bus, so no extra DALI power is needed if the Master or Dimmer already includes the DALI Power.



TECHNICAL SPECIFICATIONS

40W DRIVER | UL / cUL / FCC / ICES-005 / Class P / Class 2 / SELV / ROHS / REACH

RATED CURRENT:	 300mA 350mA 400mA 450mA 500mA 550mA 600mA 650mA 700mA 800mA 900mA 1000mA 1100mA 1200mA 1300mA 1400mA 
CURRENT TOLERANCE:	±5%
DC VOLTAGE:	3-50V 3-45V 3-40V 3-37V 3-34V 3-31V 3-29V
RATED POWER:	19.5W 22.8W 26W 29.3W 32.5W 35.8W 30W 40W
RATED INPUT VOLTAGE:	100-277VAC
RATED FREQUENCY:	50 / 60Hz
POWER FACTOR:	>0.9
EFFICIENCY@FULL LOAD:	85.0%@120VAC 60Hz 85.0%@230VAC 50Hz 85.0%@277VAC 60Hz
AC CURRENT (MAX):	0.52A
INRUSH CURRENT (Typ.):	10A, 46us@50%lpeak 120VAC 55A, 2.7us@50%lpeak 230VAC 20A, 42us@50%lpeak 277VAC
LEAKAGE CURRENT:	<0.50mA
SHORT CIRCUIT:	CONSTANT CURRENT MODE, RECOVERS AUTOMATICALLY AFTER FAULT CONDITION IS REMOVED
NO-LOAD VOLTAGE:	58V MAX
OVER TEMPERATURE:	AMBIENT TEMP. OVER 50±5°C (122±9°F), OUTPUT CURRENT WILL BE REDUCED TO 50%; AMBIENT TEMP. OVER 60±5°C (140±9°F), OUTPUT WILL BE OFF, RECOVERS AUTOMATICALLY
PROTECTION CLASS:	CLASS 2
WORKING TEMP:	-40-+40°C (-40-+104°F)
WORKING HUMIDITY:	20-90%RH, NON-CONDENSING
STORAGE TEMP:	-40-+80°C (-40-+176°F)
STORAGE HUMIDITY:	10-95%RH
TEMP COEFFICIENT:	±0.03%/°C (0-50°C) (32-122°F)
VIBRATION:	10-500Hz, 2G 10min./1 CYCLE, PERIOD FOR 60min. EACH ALONG X,Y,Z AXIS
SAFETY STANDARDS:	UL8750; CAN/CSA-C22.2 No.250.13
WITHSTAND VOLTAGE:	I/P-O/P:1.80KVAC
ISOLATION RESISTANCE:	I/P-O/P:100MΩ / 500VDC / 25°C / 70%RH
EMC EMISSION:	FCC Part15 Subpart B; ANSI C63.4a-2017; ICES-005 Issue 5