

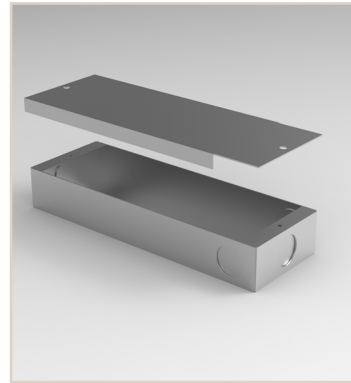
Project Name:	Type:
Product Code:	Date:

VANILLA DALI-2 60W CC DRIVER



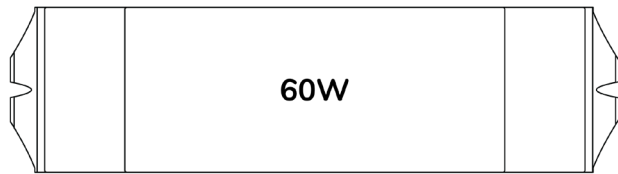
DALI-2 60W CC DRIVER

The Vanilla DALI-2 60W CC Driver is a constant current driver that supports DALI-2 control. The driver has a dimming range of 1-100%. Along with this the driver has short circuit and over temperature protection. The drivers come with the C-AFL enclosure.



PERFORMANCE

	DALI-2 LED DRIVER
	60W
VOLTAGE:	100-277VAC
DIMMING RANGE:	1-100% (FLICKER FREE)
OUTPUT:	CONSTANT CURRENT
CLASS:	CLASS 2 / CLASS P
CURRENT TOLERANCE:	±5%
ENCLOSURE:	C-AFL (INCLUDED)
DIMMING:	DALI-2
STANDARD:	UL8750, CLASS 2
WORKING TEMP:	-40~+140°F (-40~+60°C)
RATING:	IP20



W : 2.4" H : 1" L : 7.6"

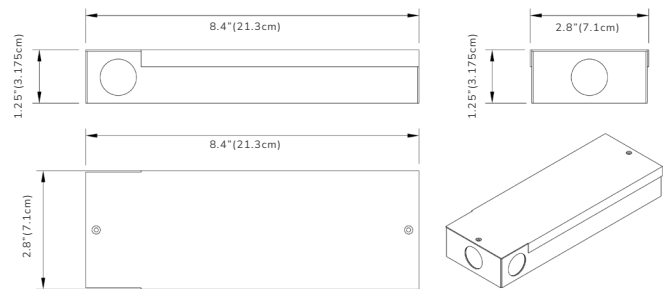
ORDER INFORMATION

Order Code			
MAKE	MODEL		
VAN	DVR	60W	CC-DALI

KEY DIMENSIONS

60W CC DALI-2 | C-AFL

Length: 8.4" (21.3cm) Width: 2.8" (7.1cm) Height: 1.25" (3.175cm)

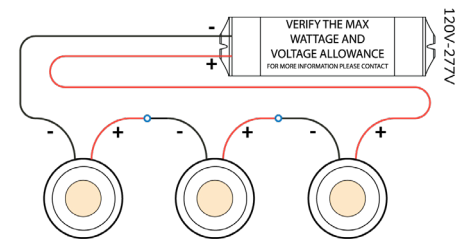


The Driver is recommended to be mounted in at least 2" of free flow air space to allow for proper ventilation.

WIRING DIAGRAM - max 70FT - NO HOT START

60W - MULTIPLE FIXTURES REQUIRE WIRING IN SERIES
TERMINAL WIRING GAUGE MAX SIZE AWG#16

SERIES WIRING



QUANTITY OF FIXTURES DEPENDANT ON FIXTURE DATA

- Using DALI-2 dimming with DALI power and dimmer



- Using DALI-2 dimming with DALI system and DALI bus





- Using DALI-2 dimming with intelligent device, DALI master and dimmer

Note: For DALI Dimming Wiring Diagram 3, please noted that only one DALI power is needed in the DALI bus, so no extra DALI power is needed if the Master or Dimmer already includes the DALI Power.



TECHNICAL SPECIFICATIONS

DALI-2 60W CC DRIVER

RATED CURRENT:	 600mA 700mA 800mA 900mA 1000mA 1100mA 1200mA 1300mA 1400mA 1500mA 1600mA 1700mA 1800mA 1900mA 2000mA 2100mA 
CURRENT TOLERANCE:	±5%
DC VOLTAGE:	3-50V 3-46V 3-43V 3-40V 3-38V 3-35V 3-33V 3-32V 3-30V 3-39V
RATED POWER:	30W 35W 40W 45W 50W 55W 60W
RATED INPUT VOLTAGE:	100-277VAC
RATED FREQUENCY:	50 / 60 Hz
POWER FACTOR:	>0.9
EFFICIENCY (Typ.):	87%@120VAC 60Hz 88.2%@277VAC 60Hz
AC CURRENT (MAX):	0.75A
INRUSH CURRENT (Typ.):	6A, 56.4us@50%lpeak 120VAC 16.4A, 38.4us@50%lpeak 277VAC
LEAKAGE CURRENT:	<0.50mA
SHORT CIRCUIT:	CONSTANT CURRENT MODE, RECOVERS AUTOMATICALLY AFTER FAULT CONDITION IS REMOVED
NO LOAD VOLTAGE:	58V
OVER TEMPERATURE:	AMBIENT TEMP. OVER 50±5°C (122±9°F), OUTPUT CURRENT WILL BE REDUCED TO 50%; AMBIENT TEMP. OVER 60±5°C (140±9°F), OUTPUT WILL BE OFF, RECOVERS AUTOMATICALLY
CERTIFICATE:	UL / cUL / FCC / ICES-005 / CLASS P / CLASS 2 / SELV / ROHS / REACH
WORKING TEMP:	-40-+40°C (-40-+104°F)
WORKING HUMIDITY:	20-90%RH, NON-CONDENSING
STORAGE TEMP:	-40-+80°C (-40-+176°F) 10-95%RH
STORAGE HUMIDITY:	10-95%RH
TEMP COEFFICIENT:	±0.03%/°C (0-50°C) (32-122°F)
VIBRATION:	10-500Hz, 2G 10min./1 CYCLE, PERIOD FOR 60min. EACH ALONG X,Y,Z AXIS
SAFETY STANDARDS:	UL8750; CAN/CSA-C22.2 No.250.13
WITHSTAND VOLTAGE:	I/P-O/P:1.80KVAC
ISOLATION RESISTANCE:	I/P-O/P:100MΩ / 500VDC / 25°C / 70%RH
EMC EMISSION:	FCC Part 15 Subpart B; ANSI C63.4a-2017; ICES-005 Issue 5